

Data Sheet

R980 Series Ruggedized Router

2024 - 10 - 16

The Ericsson Cradlepoint R980 is a ruggedized, secure appliance and router that broadens access to the increased speed and performance of 5G to support advanced applications and critical communications. Designed for the 5G future, it is 5G network slicing ready with the deployment flexibility of eSIMs which allow carrier switching without changing physical SIMs. (eSIM will be functional with future NetCloud releases.) It is a ruggedized 5G networking platform able to withstand wide temperature extremes, harsh environments, and hazardous locations while delivering enterprise-class standards of reliability, scalability, comprehensive management, and security. The R980 is available with either Mobile or Ruggedized IoT NetCloud service plans, providing features optimized for the needs of the differing deployments. The R980 also supports NetCloud Exchange and SASE services, which provide Zero Trust Network Access and cellular-optimized SD-WAN.

High-Performance Vehicle Connectivity

The Ericsson Cradlepoint R980 router with a NetCloud Mobile service plan provides a ruggedized GNSS/GPS-enabled in-vehicle network solution. When coupled with the Advanced Mobile service plan, it provides threat management, web filtering, application visibility, analytics, and advanced GNSS/GPS functionality such as location tracking and cellular coverage maps. The R980 with SD-WAN provides resilient in-vehicle connections by optimizing traffic across LTE, 5G, 5G stand-alone network slices, satellite, and Wi-Fi as WAN.

Ruggedized IoT Solution

When combined with a NetCloud Ruggedized IoT service plan, the R980 provides a versatile, ruggedized 5G router solution for connecting and protecting IoT devices at scale. It can be deployed in a wide range of environmentally harsh IoT use cases such as oil and gas, utility, and smart city infrastructure, in addition to next-gen kiosks, and video surveillance, deployments. The ruggedized design and CBRS band support make it ideal for private networks. In addition, the solution is highly extensible with APIs, SDKs, and integrations into IoT platforms, and the generous memory supports onboard edge containers.

Notable Benefits

- Gain fast, reliable connectivity with 5G NR at 19 LTE providing fast upload for video and data
- Prioritize access to public safety networks for reliable, secure connectivity
- Use advanced GNSS/GPS functionality for location tracking and cellular coverage maps
- Enable zero trust security and SD-WAN with 5G SASE
- Extend your deployment and enable customized solutions with powerful edge compute capabilities, including containers, connectors, SDKs, and API support
- Take advantage of 5G network slices to segment and isolate applications or devices, prioritize traffic, and have greater control over wireless network services
- Change carriers over the air quickly and easily with built-in eSIM capability (Will be functional with future NetCloud OS releases.)

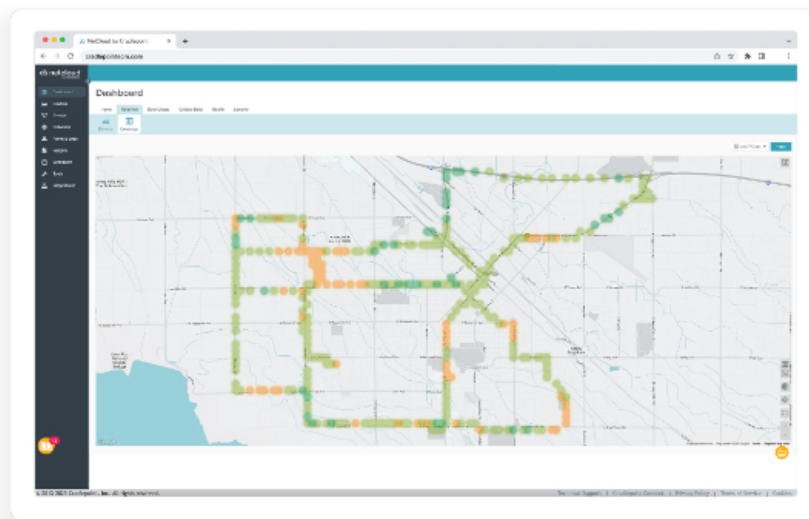


Key Software Capabilities

NetCloud Service for the R980 provides everything needed to unlock the power of 5G and connect vehicles, users, and IoT to critical applications and services. The available NetCloud IoT or Mobile service plans include the appropriate router software with powerful cloud management features for managing IoT at scale or specific mobile features like coverage maps, integrated content filtering, intrusion detection and protection, analytics and networking. Everything within NetCloud works together, making it easy to deploy, connect, and secure edge applications at scale across the organization.

Coverage Map

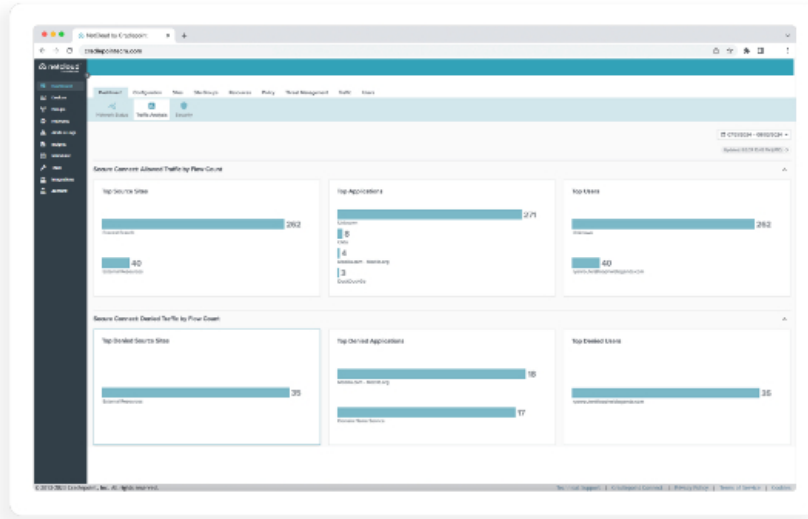
NetCloud uses GNSS/GPS and cellular health to provide precise location and signal strength analytics. Data can be mapped to display both a vehicle's current and historical locations, as well as generate detailed coverage maps that display cellular health, allowing users to gain operational insights and solve problems.



Security Services

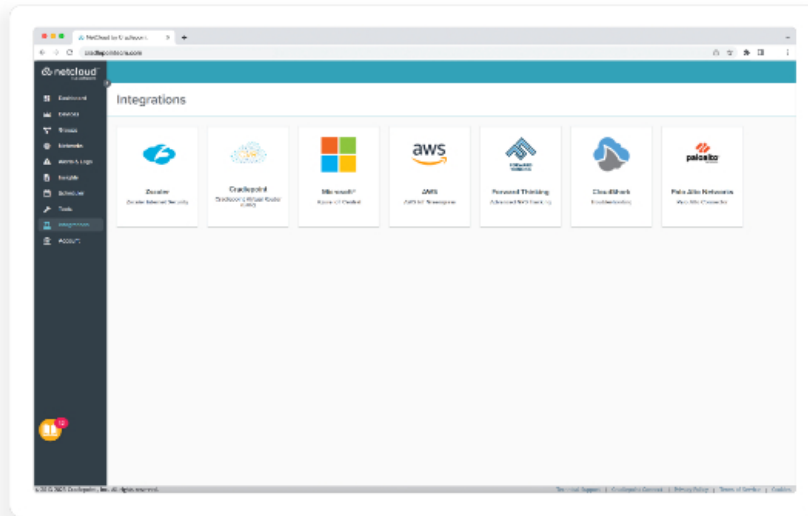
NetCloud Service includes security features and options to optimize the R980 router to meet the evolving security needs of mobile and IoT environments. The service includes a stateful zone-based firewall with the ability to add an application-aware zone-based firewall, threat management (IPS/IDS), and web filtering with the Advanced Mobile service plan.

The R980 supports NetCloud SASE and NetCloud Exchange, a unified network and security WAN architecture built upon zero-trust principles and optimized for cellular, helping lean IT organizations simplify deployment and management with shared policies and simplified processes. With NetCloud zero trust security networking, delivered through Secure Connect, other devices simply connect to the router with encrypted tunnels to build micro-segmented networks that are instantly hidden from internal and external sites. Access policies are easily defined to enable routing devices to communicate only with their authorized resources or applications and nothing else. The simple and secure zero trust access, delivered through Zero Trust Network Access, also delivers authorized contractors and third parties secure remote access to IoT devices on the WAN for remote monitoring and maintenance.



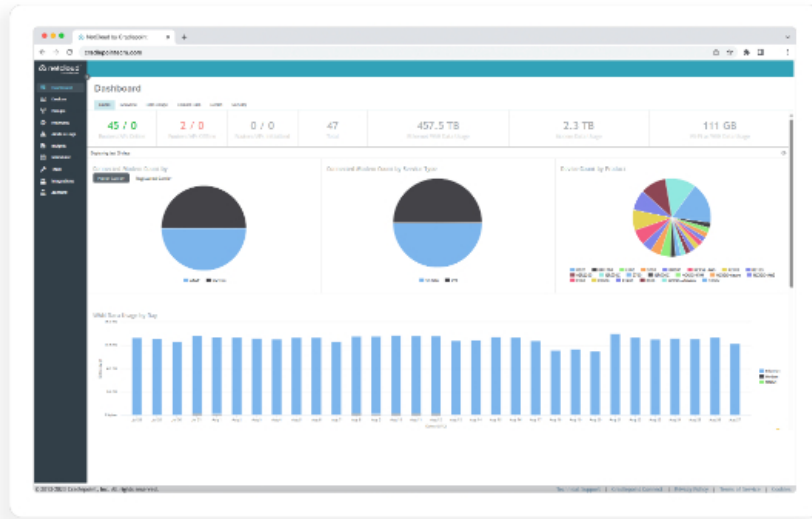
Extensibility and Integrations

The NetCloud Service and the R980 can provide higher levels of insights and control by exchanging network data with third-party applications. Leverage pre-built connections to partner applications or create custom connections across a variety of use cases using the NetCloud Container Orchestrator, NetCloud SDK, or NetCloud API.



Cloud, Routing, and SD-WAN Services

The NetCloud service plus R980 provides local processing power to handle routing, and traffic steering. Optional add-on includes 5G SASE and NetCloud Exchange SD-WAN which delivers cellular-optimized traffic, traffic steering, and Quality of Experience. A single policy engine integrates policies for Secure Connect, SD-WAN, and Zero Trust Network Access for a truly unified visibility and management experience.



Contact **NEWCOM** for more information or a quote!
781.826.7989 | sales@newcomglobal.com
NEWCOMGlobal.com



NEWCOM

Authorized Partner