



## Introduction

Welcome to IntelliHub®, the browser-based command center for fleets of any size, in any industry. IntelliHub® is where our customers manage their workload agenda and see vehicle activity and driver behavior data. Since IntelliHub® is web-based, it's available anywhere that has an internet connection. Designed around Forward Thinking's angle-based reporting, it gives customers insight into vehicle health, real-time asset tracking, reports, alerts, notifications, and much more. The IntelliHub® interface is the industry standard for ease of use, and breathes life into fleet and asset management as a single "hub" for fleet "intelligence."



### GPS Location Tracking

Track the location of **everything in your fleet**, including vehicles, such as trucks, trailers, heavy machinery, and ancillary equipment.



### Track Vehicle Speed

Monitor vehicle speed and receive **real-time alerts** when drivers exceed the posted speed limit.



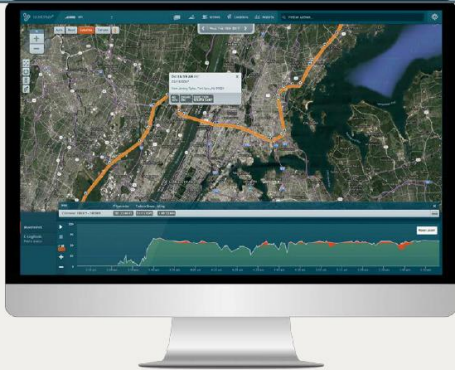
### ECM Connection

Our GPS fleet tracking devices connect directly to the vehicle's ECM, allowing you to pull **accurate odometer mileage in real-time**.



### Monitor Driver Behavior

Improve your drivers' driving habits by monitoring harsh acceleration/braking, **excessive idling**, and speeding.



#### Seamless Hours of Service

Duty logs are displayed as a bar graph with unique colors for each duty status and helpful visual cues to explain the logs. Quickly view each driver's available driving time at any moment throughout the day.

#### IFTA Reporting

IntelliHub® simplifies IFTA fuel tax reporting by collecting and consolidating your fuel and mileage data into an exportable report.

#### Live Vehicle Cameras

Virtually sit next to every driver in your fleet with the world's most advanced incident cameras. Our dual camera solution lets you see the driver and the road ahead.

#### 2-Way Messaging

Send and receive freehand messages and quick / canned messages to drivers or groups of drivers. Using one touch, they can respond to you quickly and easily.

#### Fuel Card Integrations

Our fleet management solution is natively integrated with some of the largest fuel card providers including Wex, Wright Express, and Comdata -- to name a few.

#### Location Manager

Saving locations and geographic areas will enhance your dispatching process and give you invaluable information for alerting and reporting.

#### Driver Scorecards

Driver Scorecards help you protect your vehicles from unnecessary wear and tear by identifying bad driving behavior like speeding, braking / accelerating harshly, and idling excessively.

#### Activity Reports

Put all of your vehicle and driver activity data to work with our fleet reports built to help you understand every aspect of your fleet's performance.

#### Alerts & Notifications

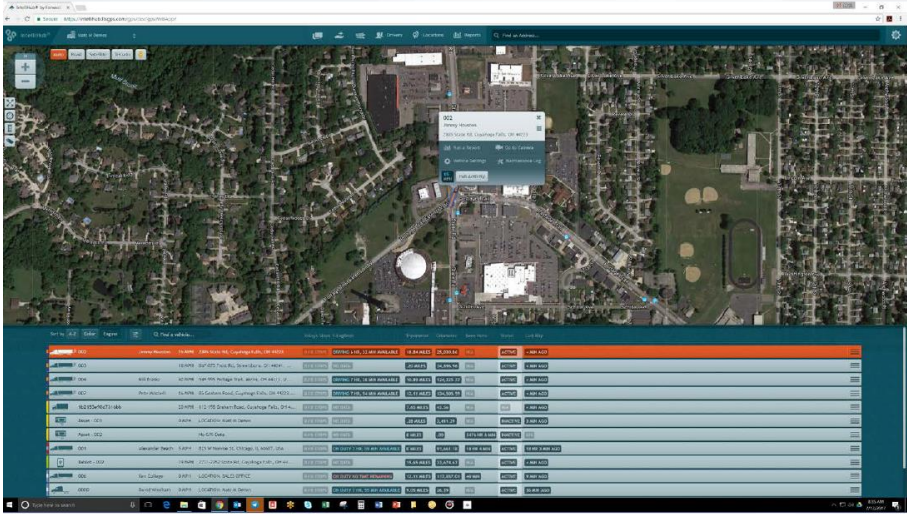
Change the way you react to unwelcome activity with fleet alerts that are triggered by important events and sent to you via email or SMS.

**002**  
Jimmy Houston  
2805 State Rd, Cuyahoga Falls, OH 44223

Run a Report    Go to Camera  
Vehicle Settings    Maintenance Log  
15 MPH Full Activity

| ID              | Driver          | MPH    | Address   | Location  | Available                      | Miles       | Cost        | Status   | Color  |
|-----------------|-----------------|--------|---|---|--------------------------------|-------------|-------------|----------|--------|
| 002             | Jimmy Houston   | 15 MPH | 2805 State Rd, Cuyahoga Falls, OH 44223             | 2805 State Rd, Cuyahoga Falls, OH 44223             | ON-DUTY 8 HR, 11 MIN AVAILABLE | 18.84 MILES | \$2,330.88  | ACTIVE   | ORANGE |
| 003             |                 |        |   |   | ON-DUTY                        | 30 MILES    | \$1,976.96  | ACTIVE   | ORANGE |
| 004             | Bill Brown      | 40 MPH | 945-995 Portage Trail, Akron, OH 44313, USA         | 945-995 Portage Trail, Akron, OH 44313, USA         | ON-DUTY 7 HR, 18 MIN AVAILABLE | 10.87 MILES | \$14,221.77 | ACTIVE   | ORANGE |
| 007             | Nate Mitchell   | 14 MPH | 35 Gaskam Road, Cuyahoga Falls, OH 44223, USA       | 35 Gaskam Road, Cuyahoga Falls, OH 44223, USA       | ON-DUTY 7 HR, 24 MIN AVAILABLE | 15.71 MILES | \$14,501.99 | ACTIVE   | ORANGE |
| 19233APK0276006 |                 | 20 MPH | 112-798 Lakeman Road, Cuyahoga Falls, OH 44223, USA | 112-798 Lakeman Road, Cuyahoga Falls, OH 44223, USA | ON-DUTY                        | 7.65 MILES  | \$2.50      | OFF      | ORANGE |
| Asset - 001     |                 | 0 MPH  | LOCATION: Hunt M Dennis                             | LOCATION: Hunt M Dennis                             | ON-DUTY                        | 18 MILES    | \$,411.29   | INACTIVE | ORANGE |
| Asset - 002     |                 |        | PO GPS Data   | PO GPS Data   | ON-DUTY                        | 0 MILES     | \$00        | INACTIVE | ORANGE |
| 001             | Alexander Beach | 5 MPH  | 823 W. Monroe St., Chicago, IL 60607, USA           | 823 W. Monroe St., Chicago, IL 60607, USA           | ON-DUTY 7 HR, 39 MIN AVAILABLE | 0 MILES     | \$1,541.18  | INACTIVE | ORANGE |
| Takae - 003     |                 | 24 MPH | 3711-2797 Crane Rd., Cuyahoga Falls, OH 44223, USA  | 3711-2797 Crane Rd., Cuyahoga Falls, OH 44223, USA  | ON-DUTY                        | 11.43 MILES | \$17,437.61 | ACTIVE   | ORANGE |
| 006             | Ken Colledge    | 0 MPH  | LOCATION: SAED OFFICE                               | LOCATION: SAED OFFICE                               | ON-DUTY NO TIME REMAINING      | 11.41 MILES | \$17,437.61 | ACTIVE   | ORANGE |
| 000             | David Wadhwa    | 0 MPH  | LOCATION: Hunt M Dennis                             | LOCATION: Hunt M Dennis                             | ON-DUTY 7 HR, 39 MIN AVAILABLE | 0.08 MILES  | \$2.78      | ACTIVE   | ORANGE |



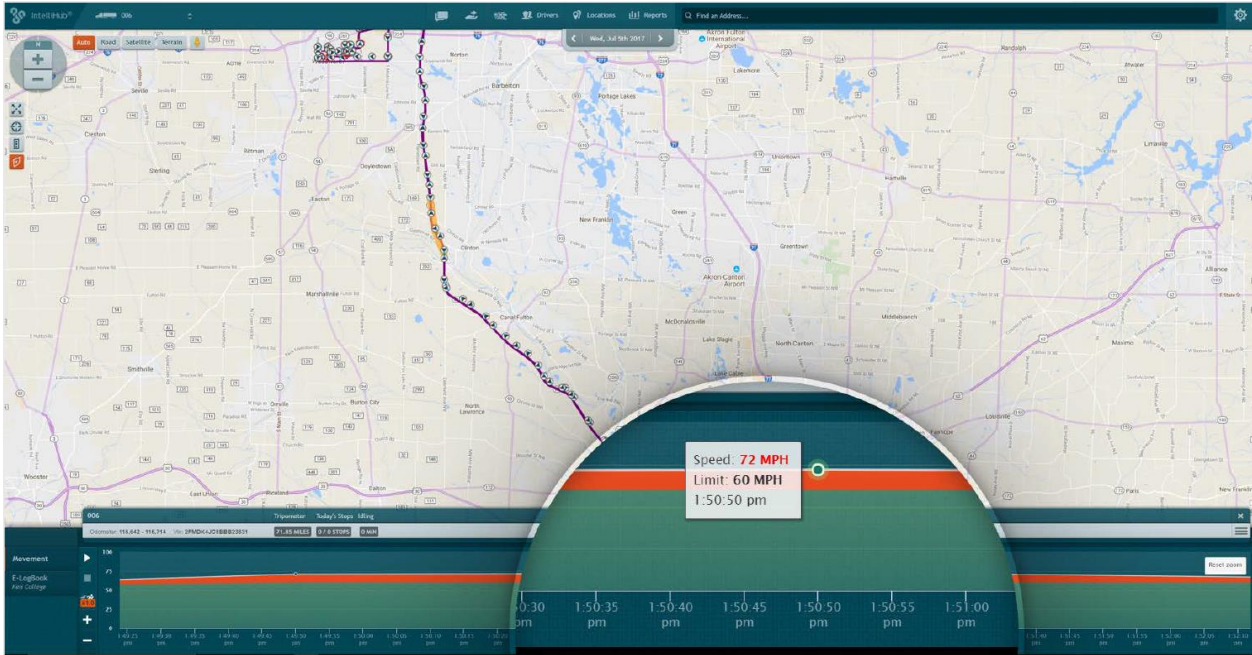


### Full Activity

To access the Full Activity of a specific asset, simply click on the desired asset from the list, and click the "Full Activity" button in the display window that appears on the map.

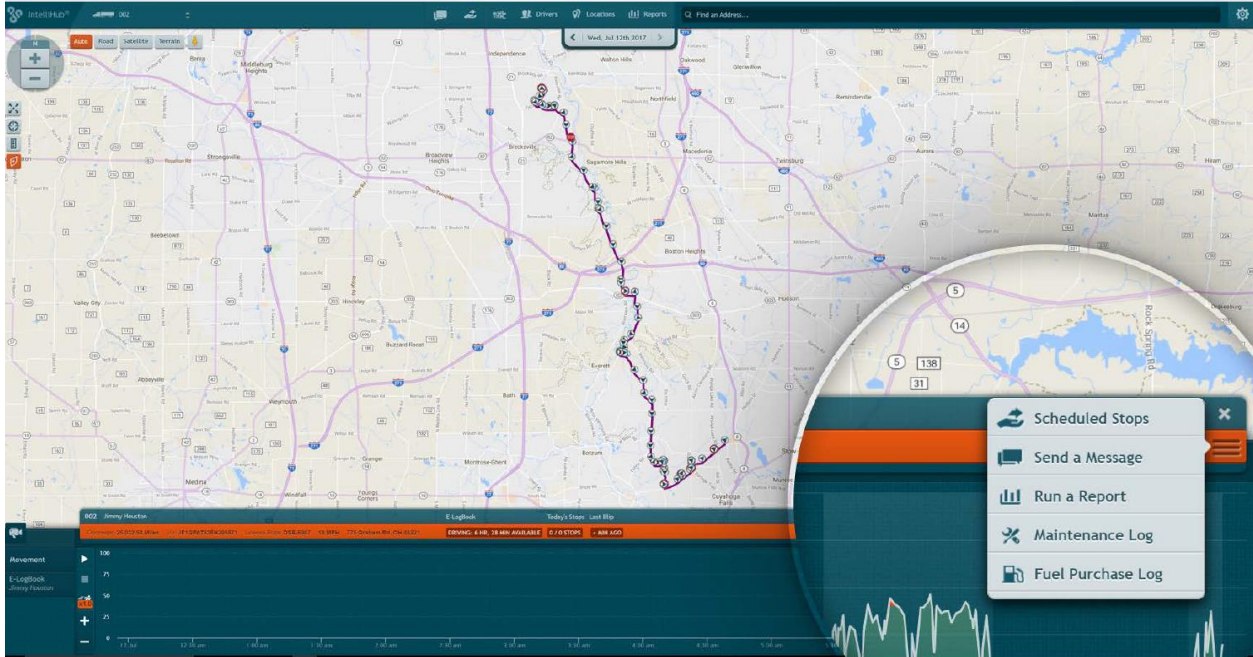
After clicking Full Activity, IntelliHub® will display the asset's smart breadcrumb trail and all available detail associated with the specific vehicle selected.

**NOTE:** Full Activity can also be accessed by clicking the Expand Button (⊞) on the Asset Detail line.









IntelliHub®

| Vehicle ID | Vehicle Name    | Location       | Report Category           | Report Status | Report Date |
|------------|-----------------|----------------|---------------------------|---------------|-------------|
| 1001       | John Deere S780 | 1001-1001-1001 | Current Status            | OK            | 10/10/2017  |
| 1002       | John Deere S780 | 1002-1002-1002 | Engine Oil Level          | Low           | 10/10/2017  |
| 1003       | John Deere S780 | 1003-1003-1003 | Fuel Consumption          | High          | 10/10/2017  |
| 1004       | John Deere S780 | 1004-1004-1004 | Engine Oil Change         | Due           | 10/10/2017  |
| 1005       | John Deere S780 | 1005-1005-1005 | Engine Oil Level Off      | Off           | 10/10/2017  |
| 1006       | John Deere S780 | 1006-1006-1006 | Engine Oil Change Off     | Off           | 10/10/2017  |
| 1007       | John Deere S780 | 1007-1007-1007 | Fuel Performance          | Good          | 10/10/2017  |
| 1008       | John Deere S780 | 1008-1008-1008 | Historical Fleet Location | Active        | 10/10/2017  |
| 1009       | John Deere S780 | 1009-1009-1009 | Historical Fleet Location | Active        | 10/10/2017  |

### Reports

A wide range of reports are native to IntelliHub®. These Reports can be easily accessed by clicking on the Reports Tab .

A pop-up screen will appear showing all Reports, with their descriptions, available for use. Search for desired Reports with the search bar function or scroll through the list.

IntelliHub® categorizes Reports by:

- Fleet
- Vehicle
- Driver

Automated Reports can be configured by our Support team, and sent daily, weekly, monthly, or whichever time-frame requested to any person requested.