

Communications are crucial.  
You cannot tolerate delayed data transfers.

# Be in the know about your Network Infrastructure to better manage it.

## Let the Data Tell the Story.

Synopsis seamlessly connects into Armada and Mult IP's logging engine to provide a sleek and easy access to network and application performance which allows for Real Time Monitoring, Alerting, Signal Strength and GPS Tracking.



### Proactive Performance Intelligence Drives Network ROI

- ◆ User Friendly Interface
  - ◆ Customizable to your specific needs.\*
  - ◆ Access from anywhere, at any time, on any device
  - ◆ Configure Multiple Alerts Thresholds
  - ◆ GPS Tracking and Signal Strength Mapping
- \*Professional Services charges may apply based on customization requirements.



Need more information about Synopsis? Looking to improve your mobile security?  
Contact us at **781-826-7989** or visit us at **www.NEWCOMGlobal.com**.

March 2020 © Radio IP Software Inc. All rights reserved.  
Radio IP and Radio IP Design are fully registered trademarks. Mult-IP is a trademark of Radio IP Software Inc.



# Get to know **everything** about your **network performance**

## Unleash the Power of your Data

Synopsis comes preloaded with a large library of Monitoring Agents and Alerts. Each offers comprehensive details on a wide range of system events for a real time view of your network activity. Here are some of the categories and the corresponding dashboard.

- |                    |                                                                                                                                                                                                                                                                                                                                                                                                                                                                                                                                                                                                                                                                                                                                                                                                                                                   |
|--------------------|---------------------------------------------------------------------------------------------------------------------------------------------------------------------------------------------------------------------------------------------------------------------------------------------------------------------------------------------------------------------------------------------------------------------------------------------------------------------------------------------------------------------------------------------------------------------------------------------------------------------------------------------------------------------------------------------------------------------------------------------------------------------------------------------------------------------------------------------------|
| <b>Application</b> | <ul style="list-style-type: none"><li>◆ <b>Application Traffic</b><br/>Use this dashboard to unveil how the client mobile units' applications are using the networks. Toggle between the Application, Driver, and Client views to understand utilization trends.</li></ul>                                                                                                                                                                                                                                                                                                                                                                                                                                                                                                                                                                        |
| <b>Client</b>      | <ul style="list-style-type: none"><li>◆ <b>Battery Level</b><br/>Use this dashboard to track specific client mobile unit battery charge level over time in percentage</li><li>◆ <b>Operating System</b><br/>Use this dashboard to understand the distribution of Operating System (OS) versions throughout the selected client mobile units.</li></ul>                                                                                                                                                                                                                                                                                                                                                                                                                                                                                            |
| <b>Gateway</b>     | <ul style="list-style-type: none"><li>◆ <b>Load</b><br/>Use this dashboard to calculate and display gateway load over the specified period of time. The gateway load is comprised of CPU usage, memory usage, and number of connected clients which histograms can be plotted separately.</li></ul>                                                                                                                                                                                                                                                                                                                                                                                                                                                                                                                                               |
| <b>Network</b>     | <ul style="list-style-type: none"><li>◆ <b>Client Traffic</b><br/>Use this dashboard to study network usage by client mobile unit, find heavy network users. Toggle between the Client and Driver views to refine your query.</li><li>◆ <b>Driver Traffic</b><br/>Use this dashboard to study network usage by driver (network interface).</li><li>◆ <b>Group Traffic</b><br/>Use this dashboard to study network usage by group (Multi-IP group of users). Toggle between the Group and Driver views to refine your query.</li><li>◆ <b>Out of Coverage</b><br/>Use this dashboard to query total out of coverage seconds per client mobile unit. Clicking on an area of the pie chart will display its histogram.</li><li>◆ <b>Roaming</b><br/>Use this dashboard to see when a mobile client unit roamed between different networks.</li></ul> |

## Technical Requirements

It is recommended to use two distinct hosts for the Web server and Database server. Mult IP Version 5.0 is required to operate with Synopsis.

### Browsers

- Chrome: most recent public version
- Firefox : most recent public version
- Safari 9.1
- Internet Explorer 11 (without Compatibility Mode)

### Web Server

#### Software

- Operating System:
- CentOS, Red Hat and most flavors of 64-bit Linux

#### Hardware

- Quad-Core CPU, 8GB+ RAM

### Data Base Server

#### Software

- Operating System: CentOS, Red Hat and most flavors of 64-bit Linux
- Pre-requisite : PostGresSql 11

#### Hardware

- Quad-Core CPU, 8GB+ RAM,
- Hard drive: at least 4 Gb/month worth of data for an average use with approximate 100 clients.

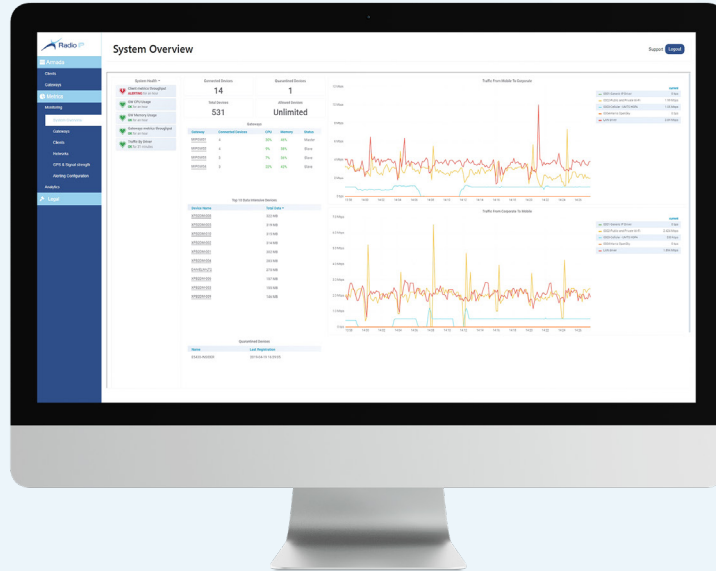


Need more information about Synopsis? Looking to improve your mobile security? Contact us at **781-826-7989** or visit us at **www.NEWCOMGlobal.com**.

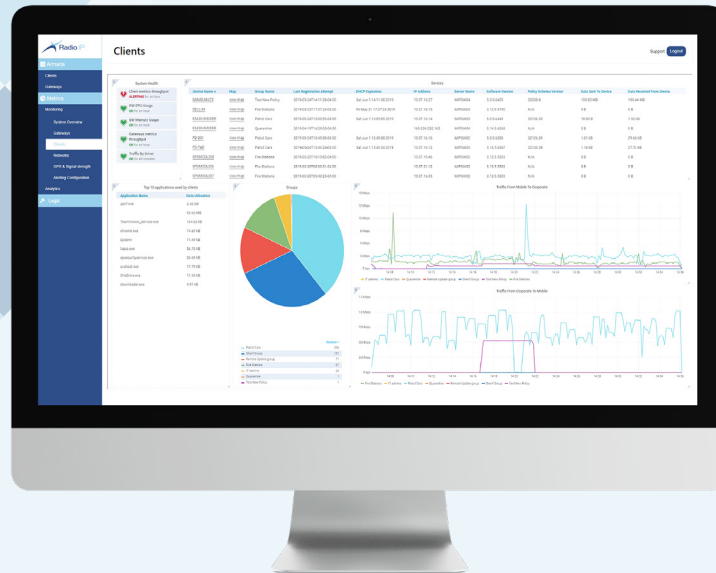
March 2020 © Radio IP Software Inc. All rights reserved.  
Radio IP and Radio IP Design are fully registered trademarks. Mult-IP is a trademark of Radio IP Software Inc.



# Metrics System Overview



# Metrics Clients Page

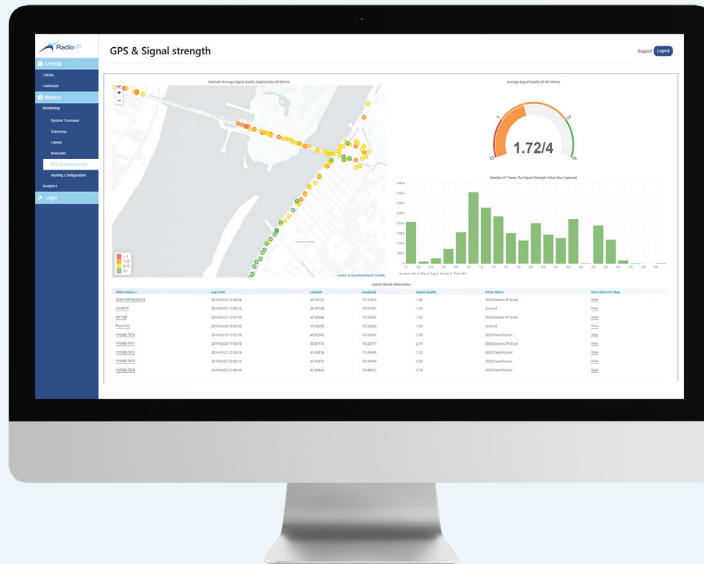


Need more information about Synopsis? Looking to improve your mobile security?  
 Contact us at **781-826-7989** or visit us at [www.NEWCOMGlobal.com](http://www.NEWCOMGlobal.com).

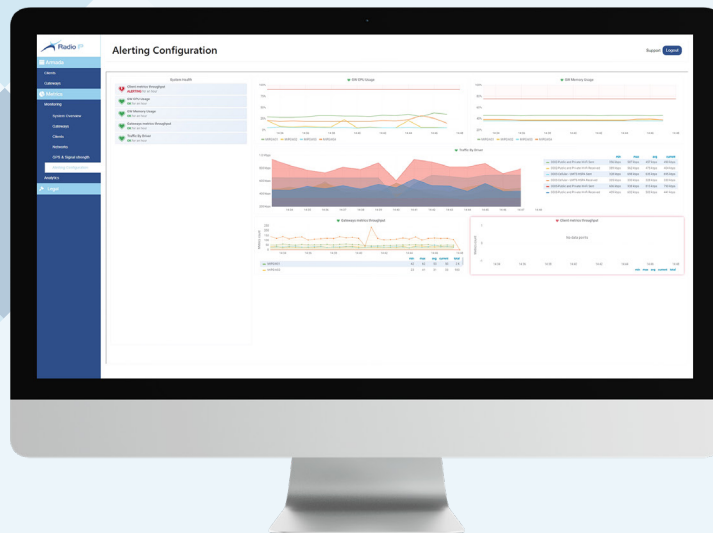
March 2020 © Radio IP Software Inc. All rights reserved.  
 Radio IP and Radio IP Design are fully registered trademarks. Mult-IP is a trademark of Radio IP Software Inc.



## Metrics Signal Strength



## Metrics Alerts



Need more information about Synopsis? Looking to improve your mobile security?  
 Contact us at **781-826-7989** or visit us at **www.NEWCOMGlobal.com**.

March 2020 © Radio IP Software Inc. All rights reserved.  
 Radio IP and Radio IP Design are fully registered trademarks. Mult-IP is a trademark of Radio IP Software Inc.

